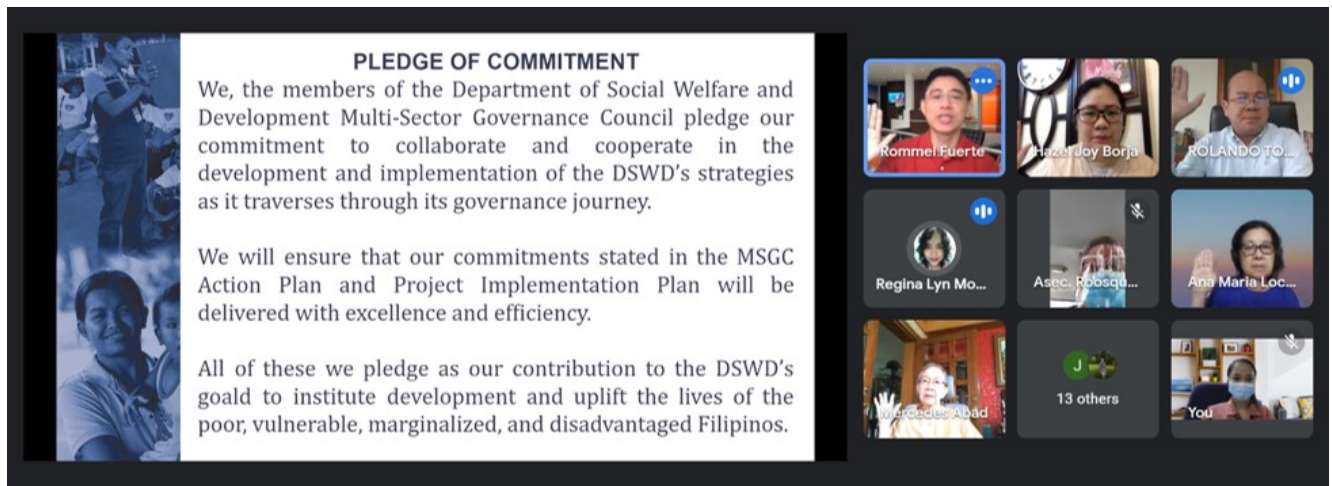


DSWD gets multi-sectoral support in delivery of programs, services



The Department of Social Welfare and Development (DSWD) expressed its gratitude to the DSWD Multi-Sector Governance Council (MSGC) for its pledge of commitment to support the Department in its governance journey for a sustained quality public service.

MSGC is a council which consists of different external stakeholders and partners of the Department and is currently under the leadership of newly-elected Chairperson and Vice-Chairperson, Professor Maria Fe V. Mendoza (UP-NCPAG) and Director Rommel V. Fuerte (World Vision, Inc), respectively.

In a recent council meeting, the MSGC and all the member-organizations committed to extend their full support to DSWD until 31 December 2021 to ensure the continuity of the MSGC's action plan and the smooth implementation of the DSWD's programs and services.

As part of the council's commitment, the MSGC assisted DSWD in paving the way for the transition of devolving specific programs to the local government units (LGUs) through its

contribution in the development of the Manual of Operations for devolved programs. The Manual aims to make the programs more responsive to the needs of the Filipinos at the community level.

Moreover, the Council also extended its expertise by serving as adviser in the improvement of the Department's Resource Generation Management Strategies. The MSGC also assists the Department in the implementation of the DSWD Recalibrated Strategy and SULONG Recovery Plan, which encapsulate the Department's revised plans which are responsive to the effects of the pandemic.

On behalf of the Secretary, Undersecretary Danilo G. Pamonag expressed the Department's gratitude to the MSGC members and hoped that they would continue to be the Department's champions and partners in the shared goal to institute development and uplift the lives of the poor, vulnerable, and the marginalized.

Ultimately, with the sustained collaboration of the Department and the MSGC, the Department will be able to consistently provide a "Maagap at Mapagkalingang Serbisyo". ###