

DEPARTMENT OF SOCIAL WELFARE AND DEVELOPMENT  
Regional Office III  
Government Centre, Maimpis, City of San Fernando (P)

REQUEST FOR QUOTATION

RFQ No. 2022-10-717  
PR No. 2022-10-1319  
Mode of Procurement: NP-SVP

\*Company Name: \_\_\_\_\_  
\*Company Address: \_\_\_\_\_  
\*Contact Person: \_\_\_\_\_  
\*Contact No.: \_\_\_\_\_  
\*Email Address: \_\_\_\_\_  
\*PhilGeps Reg. No.: \_\_\_\_\_

**\*REQUIRED.** To avoid bid disqualification,  
please fill out all the items accordingly.  
Indicate "N/A" if not applicable. Thank you!

\*Title of the Project: Construction of Fire Exit Stair of Boys Dormitory of AMOR Village, San Francisco East, Anao, Tarlac City.

Sir/Madam:

Please quote your government price/s including delivery charges, VAT or other applicable taxes, and other incidental expenses for the goods listed in **Annex A**. Failure to indicate information could be basis for non – compliance. Also, furnish us with **descriptive brochures, catalogues, literatures and/or samples**, if applicable.

If you are the exclusive manufacturer, distributor or agent in the Philippines for the goods listed **Annex A**, please attach in your quotation, a duly notarized certification to this effect.

Interested supplier/s are required to submit copies of their **Mayor's/Business Permit**. The **Certificate of Platinum Membership** may be submitted in lieu of the Mayor's/Business Permit, PhilGEPS Registration Number and PCAB License (Small B) must likewise be submitted.

Please accomplish and submit this from together with Annex A and all the required documents to DSWD FO III - BAC Secretariat at DSWD Regional Office III, Diosdado Macapagal Government Center, Maimpis, City of San Fernando, Pampanga or **email to [quotation.fo3@dswd.gov.ph](mailto:quotation.fo3@dswd.gov.ph)** not later than **3:00PM October 24, 2022**. Quotations submitted to different email address(es) as stated above shall not be considered for evaluation. Please indicate in the subject of your email the title of the Project using this format: **[RFQ Number] [Deadline of Submission]**. Bids submitted must be in **pdf format ONLY** clearly scanned in a **SINGLE FILE**. Any supporting documents shall be saved in a separate pdf file.

Very truly yours,

**JENNIFER CAMPANG – MORALES**  
Procurement Section Chief

**Terms and Conditions:**

- Award shall be made on per: ☐ Item Basis ☒ Lot Basis
- No negative feedback/record of End User to Service Provider within Three (3) Months.
- Quotation validity shall be: Thirty (30) Calendar Day
- Good/s/Activity shall be delivered within: See Attached Terms of Reference or Bills of Quantities
- Place of Delivery: See Attached Terms of Reference or Bills of Quantities
- Terms of Payment: Within Thirty (30) Calendar Days  
Payment through LDDAP-ADA (List of Due and Demandable Accounts Payable-Advise to Debit Account).  
Account Name: \_\_\_\_\_ Account Number: \_\_\_\_\_  
Bank Name: \_\_\_\_\_ Branch: \_\_\_\_\_  
\*Note; Non-Land Bank of the Philippines accounts shall be charged a service fee.
- Liquidated Damages/Penalty: In case of failure to make full delivery within the time specified above, amount of the liquidated damages shall be at least equal to one-tenth of one percent (0.001) of the cost of the unperformed portion for every day of delay. Once the cumulative amount of liquidated damages reaches ten percent (10%) of the amount of the contract, the Procuring Entity may rescind or terminate the contract, without prejudice to other courses of action and remedies available under the circumstances.
- For goods, please indicate brand, model and country or origin.
- In case of discrepancy between unit cost and total cost, unit cost shall prevail.
- Please indicate Warranty: \_\_\_\_\_
- NOTE: "Prospective supplier must be registered at the Philippine Government Electronic Procurement System (PhilGEPS). You may visit the PhilGEPS website at [www.philgeps.gov.ph](http://www.philgeps.gov.ph) and register for free.

  
JAMIE M. PINEDA

PPMU

\_\_\_\_\_  
(Signature over Printed Name)  
Supplier

Supplier

## BILL OF QUANTITIES

Name of Project: <b>CONSTRUCTION OF FIRE EXIT STAIR AT BOYS DORMITORY</b>			Location: <b>AMOR VILLAGE, SAN FRANCISCO EAST, ANAO, TARLAC CITY</b>		
Total Project Cost:	<b>PHP</b>		Project Duration:	<b>60.00</b>	<b>CALENDAR DAYS</b>
Source of Fund:	<b>REGULAR FUND</b>		Mode of Procurement:	<b>SMALL VALUE PROCUREMENT</b>	
Date of POW:			Source of Manpower:	<b>OUTSOURCE</b>	

Item No.	Item Description		Quantity	Unit	Unit Material Cost		Unit Labor/ Equipment Cost	Unit Cost	Amount
I.	OTHER GENERAL REQUIREMENTS								
	A.)	Mobilization/Demobilization	1.00	LS.					
	1	Equipment	Quantity	Unit	No. of Hours	Rate per Hour	Equipment Unit Cost	Amount	
	1.1	Service Truck	1.00	--	8.00				
		Equipment Cost -----							
		Overhead, Contingencies and Miscellaneous (OCM)	0.00%	of Direct Unit Cost					
		Contractor's Profit (CP)	0.00%	of Direct Unit Cost					
		Value Added Tax (VAT)	5.00%	of (Direct Unit Cost+ OCM + CP)					
		A. (Sub-Total)							
	B.)	Occupational Safety and Health Program	1.00	LS.					
	1	Labor	Quantity	Unit	No. of Manpower	Rate per day	Labor Unit Cost	Amount	
	1.1	First Aider	0.00	--	0.00				
		Labor Cost -----							
	2	Materials	Quantity	Unit	No. of Days	Rate per day	Unit Cost	Amount	
	2.1	Safety Helmet	12.00	pcs	-				
	2.2	Safety Gloves	12.00	pcs	-				
	2.3	Safety Shoes	12.00	pcs	-				
	2.4	Vest	12.00	pcs	-				
	2.5	PPE Signage (4'x8')	1.00	set	-				
	2.6	Safety First Signage (4'x4')	1.00	set	-				
	2.7	Warning Signs (2'x3')	3.00	set	-				
		Material Cost -----							
		Overhead, Contingencies and Miscellaneous (OCM)	0.00%	of Direct Unit Cost					
		Contractor's Profit (CP)	8.00%	of Direct Unit Cost					
		Value Added Tax (VAT)	5.00%	of (Direct Unit Cost+ OCM + CP)					
		B. (Sub-Total)							

SUB - TOTAL (I.OTHER GENERAL REQUIREMENTS)							
II.	CIVIL AND EARTHWORKS						
	A.)	Demolition Works	1.00	LS.			
	1	Materials	Quantity	Unit	Unit Material Cost	Unit Labor/ Equipment Cost	Unit Cost Amount
	1.1	Demolition Works	1.00	Ls.	0.00		
		Material Cost -----					
	2	Labor	Quantity	Unit	No. of Manpower	Rate per Hour	Labor Unit Cost Amount
	2.1	Construction Foreman	144.00	Hrs	1.00		
	2.2	Skilled Worker	32.00	Hrs	2.00		
	2.3	Unskilled/Helper	48.00	Hrs	2.00		
		Labor Cost -----					
	3	Equipment	Quantity	Unit	No. of Hours	Rate per Hour	Equipment Unit Cost Amount
	3.1	Cutting Outfit	1.00	Unit	56.00		
	3.2	Minor Tools (10% of Labor Cost)	1.00	Ls.	-	-	-
		Equipment Cost -----					
		A. (Sub-Total)					
	B.)	Structural Excavation ( Common Soil)	8.00	CU.M			
	1	Labor	Quantity	Unit	No. of Manpower	Rate per Hour	Labor Unit Cost Amount
	1.1	Construction Foreman	0.40	Hrs	1.00		
	1.2	Unskilled/Helper	0.40	Hrs	3.00		
		Labor Cost -----					
	2	Equipment	Quantity	Unit	No. of Hours	Rate per Hour	Equipment Unit Cost Amount
	2.1	Backhoe (0.80 cum)	1.00	Unit	0.40		
	2.2	Dump Truck (12 cu.yd)	2.00	Unit	0.40		
	2.3	Minor Tools (10% of Labor Cost)	1.00	Ls.	-		
		Equipment Cost -----					
		B. (Sub-Total)					
	C.)	Embankment from Structure Excavation	10.19	CU.M			
	1	Materials	Quantity	Unit	Unit Material Cost	Unit Labor/ Equipment Cost	Unit Cost Amount
	1.1		-		-		
		Material Cost -----					
	2	Labor	Quantity	Unit	No. of Manpower	Rate per Hour	Labor Unit Cost Amount
	2.1	Construction Foreman	1.04	Hrs	1.00		
	2.2	Unskilled/Helper	1.04	Hrs	3.00		
		Labor Cost -----					
	3	Equipment	Quantity	Unit	No. of Hours	Rate per Hour	Equipment Unit Cost Amount
	3.1	Backhoe (0.80 cum)	1.00	Unit	0.78		
	3.2	Plate Compactor 5hp (Inclusive oil & fuel)	1.00	Unit	0.78		

3.3	Minor Tools (10% of Labor Cost)	1.00	Ls.	-			
	Equipment Cost -----						
C. (Sub-Total)							
D.)	Gravel Fill	1.00	CU.M				
1	Materials	Quantity	Unit	Unit Material Cost	Unit Labor/ Equipment Cost	Unit Cost	Amount
1.1	3/4" Gravel with 5% Shrinkage factor	1.05	Cu.m	708.75			
	Material Cost -----						
2	Labor	Quantity	Unit	No. of Manpower	Rate per Hour	Labor Unit Cost	Amount
2.1	Construction Foreman	0.83	Hrs	1.00			
2.2	Unskilled/Helper	0.83	Hrs	3.00			
	Labor Cost -----						
3	Equipment	Quantity	Unit	No. of Hours	Rate per Hour	Equipment Unit Cost	Amount
3.1	Plate Compactor 5hp (Inclusive oil & fuel)	1.00	Unit	0.42			
3.2	Minor Tools (10% of Labor Cost)	1.00	Ls.	-			
	Equipment Cost -----						
	D. (Sub-Total)						
SUB - TOTAL (II.CIVIL AND EARTHWORKS)							
III.	REINFORCING STEEL BAR WORKS						
A.)	Fabrication/erection and setting-up of Reinforcing bars for stair footings	500.00	KGS.				
1	Materials	Quantity	Unit	Unit Material Cost	Unit Labor/ Equipment Cost	Unit Cost	Amount
1.1	Deformed Reinforcing Steel	500.00	Kgs.	35.70			
1.2	# 16 Galvanized Iron Wire	7.50	Kgs.	57.75			
1.3	Consumables (5% of Material Cost)	1.00	Ls.	--			
	Material Cost -----						
2	Labor	Quantity	Unit	No. of Manpower	Rate per Hour	Labor Unit Cost	Amount
2.1	Construction Foreman	3.87	Hrs	1.00			
2.2	Skilled Worker	3.87	Hrs	3.00			
2.3	Unskilled/Helper	3.87	Hrs	12.00			
	Labor Cost -----						
3	Equipment	Quantity	Unit	No. of Hours	Rate per Hour	Equipment Unit Cost	Amount
3.1	Bar Cutter	1.00	Unit	1.94			
3.2	Bar Bender	1.00	Unit	1.94			
3.3	Minor Tools (10% of Labor Cost)	1.00	Ls.	--			
	Equipment Cost -----						
	A. (Sub-Total)						
SUB - TOTAL (III.REINFORCING STEEL BAR WORKS)							
IV.	FORMS AND FALSE WORK						

A.)	Form,False works,braces,ribs and setting-up for Stair	10.15	SQ.M					
	1	Materials	Quantity	Unit	Unit Material Cost	Unit Labor/ Equipment Cost	Unit Cost	Amount
		Material Cost -----						
	2	Labor	Quantity	Unit	No. of Manpower	Rate per Hour	Labor Unit Cost	Amount
		Installation						
	2.1	Construction Foreman	2.26	Hrs	1.00			
	2.2	Skilled Worker	2.26	Hrs	4.00			
	2.3	Unskilled/Helper	2.26	Hrs	6.00			
		Stripping						
	2.4	Construction Foreman	1.26	Hrs	1.00			
2.5	Unskilled/Helper	1.26	Hrs	6.00				
	Labor Cost -----							
3	Equipment	Quantity	Unit	No. of Hours	Rate per Hour	Equipment Unit Cost	Amount	
3.1	a. H-Frame 1.7x1.2 set	40.00	Sets	31.58				
3.2	2 pcs H-Frame			-				
3.3	4 pcs diagonal cross braces			-				
3.4	4pcs horizontal races			-				
3.5	8 pcs joint pins			-				
3.6	b. Shorng Jack, 3.8m full extension	62.00	Pcs.	31.58				
3.7	c. Adjustable U-head Jack, 0.60m	80.00	Pcs.	31.58				
3.8	d.Adjustable Base Jack, 0.60m	80.00	Pcs.	31.58				
3.9	e. 1-1/2 GI Pipe, 6m	62.00	Pcs.	31.58				
3.10	f. 1-1/2 GI Pipe,3m	16.00	Pcs.	31.58				
3.11	g. 1-1/2 GI Pipe, 4m	32.00	Pcs.	31.58				
3.12	h. 1-1/2 GI Pipe, 1m	216.00	Pcs.	31.58				
3.13	i. Tie Rod, 0.6m	278.00	Pcs.	31.58				
3.14	j. Round Wing Nut	558.00	Pcs.	31.58				
	Equipment Cost -----							
	A. (Sub-Total)							
SUB - TOTAL (IV.FORMS AND FALSE WORK)								
V.	STRUCTURAL CONCRETE WORKS							
A.)	Concrete pouring for Stair footing	6.00	CU.M					
1	Materials	Quantity	Unit	Unit Material Cost	Unit Labor/ Equipment	Unit Cost	Amount	
1.1	Structural Concrete, Class A(3000psi),28 days							
1.2	Gravel 3/4"	6.00	cu.m.	761.25				
1.3	Sand	3.00	cu.m.	341.25				
1.4	Portland Cement	54.60	bag	241.50				
	Material Cost -----							

2	Labor	Quantity	Unit	No. of Manpower	Rate per Hour	Labor Unit Cost	Amount
2.1	Construction Foreman	16.81	Hrs	1.00			
2.2	Skilled Worker	16.81	Hrs	1.00			
2.3	Unskilled/Helper	16.81	Hrs	4.00			
	Labor Cost -----						
3	Equipment	Quantity	Unit	No. of Hours	Rate per Hour	Equipment Unit Cost	Amount
3.1	One Bagger Mixer	1.00	Unit	16.81			
3.2	Minor Tools (10% of Labor Cost)	1.00	Ls.	-			
	Equipment Cost -----						
A. (Sub-Total)							
SUB - TOTAL (V.STRUCTURAL CONCRETE WORKS)							

VI.	FABRICATED MATERIALS AND HARDWARES						
A.)	Installation of fabricated Fire Rated Fire Exit Steel Door, Aluminum Powder Coated Glass Windows, prefabricated doors and door jambs, including the neccessary part and accessories	14.34	SQ.M				
1	Materials	Quantity	Unit	Unit Material Cost	Labor Unit Cost	Unit Cost	Amount
1.1	Fire Rated Fire Exit Steel Door	3.78	Sq.m	16,308.34			
	Material Cost -----						
2	Labor	Quantity	Unit	No. of Manpower	Rate per Hour	Labor Unit Cost	Amount
2.1	Construction Foreman	14.54	Hrs	1.00			
2.2	Skilled Worker	14.54	Hrs	1.00			
2.3	Unskilled	14.54	Hrs	2.00			
	Labor Cost -----						
3	Equipment	Quantity	Unit	No. of Hours	Rate per Hour	Equipment Unit Cost	Amount
3.1	Welding Machine	1.00	Unit	3.63			
3.2	Minor Tools (10% of Labor Cost)	--	--	-			
	Equipment Cost -----						
1	Materials	Quantity	Unit	Unit Material Cost	Labor Unit Cost	Unit Cost	Amount
1.1	Aluminum Powder Coated Glass Window with 6mm thk. Clear Glass	10.56	Sq.m	5,948.25			
	Material Cost -----						
2	Labor	Quantity	Unit	No. of Manpower	Rate per Hour	Labor Unit Cost	Amount
2.1	Construction Foreman	29.33	Hrs	1.00			
2.2	Skilled Worker	29.33	Hrs	1.00			
2.3	Unskilled	29.33	Hrs	1.00			
	Labor Cost -----						
3	Equipment	Quantity	Unit	No. of Hours	Rate per Hour	Equipment Unit Cost	Amount
3.1	Minor Tools (10% of Labor Cost)	--	--	-			
	Equipment Cost -----						
A. (Sub-Total)							



SUB - TOTAL (VI.FABRICATED MATERIALS AND HARDWARES)							
VII.	PAINTING WORKS						
	A.)	Masonry/Concrete Painting wall and Metals	27.28	SQ.M			
	1	Materials	Quantity	Unit	Unit Material Cost	Labor Unit Cost	Unit Cost
	1.1	Painting Works ( Masonry / Concrete )	5.28	Sq.m	88.97		
		Material Cost -----					
	2	Labor	Quantity	Unit	No. of Manpower	Rate per Hour	Labor Unit Cost
	2.1	Construction Foreman	2.51	Hrs	1.00		
	2.2	Skilled Worker	2.51	Hrs	2.00		
	2.3	Unskilled	2.51	Hrs	1.00		
		Labor Cost -----					
	3	Equipment	Quantity	Unit	No. of Hours	Rate per Hour	Equipment Unit Cost
	3.1	Minor Tools (10% of Labor Cost)	1.00	Ls.	-		
		Equipment Cost -----					
	1	Materials	Quantity	Unit	Unit Material Cost	Labor Unit Cost	Unit Cost
	1.1	Painting Works (MetalPainting)	22.00	Sq.m	96.59		
		Material Cost -----					
	2	Labor	Quantity	Unit	No. of Manpower	Rate per Hour	Labor Unit Cost
	2.1	Construction Foreman	11.00	Hrs	1.00		
	2.2	Skilled Worker	11.00	Hrs	2.00		
	2.3	Unskilled	11.00	Hrs	1.00		
		Labor Cost -----					
	3	Equipment	Quantity	Unit	No. of Hours	Rate per Hour	Equipment Unit Cost
	3.1	Minor Tools (10% of Labor Cost)	1.00	Ls.	-		
		Equipment Cost -----					
		A. (Sub-Total)					
SUB - TOTAL (VII.PAINTING WORKS)							
VIII.	STRUCTURAL STEEL WORKS						
	A.)	Fabrication, Welding and Installation of Structural Steel Angular Bar,Reinforced Concrete Pedestal,Steel Plates, Anchor Bolts and Steel Railing	1.00	Ls.			
	1	Materials	Quantity	Unit	Unit Material Cost	Labor Unit Cost	Unit Cost
	1.1	Structural Steel, Angular Bar	1,020.00	Kgs.	59.02		
		Material Cost -----					
	2	Labor	Quantity	Unit	No. of Manpower	Rate per Hour	Labor Unit Cost
		Fabrication					
	2.1	Construction Foreman	12.00	Hrs	1.00		
	2.2	Skilled Worker	12.00	Hrs	2.00		
	2.3	Unskilled	12.00	Hrs	2.00		



	Erection						
2.4	Skilled Worker	5.88	Hrs	3.00			
2.5	Unskilled	5.88	Hrs	3.00			
	<i>Labor Cost -----</i>						
3	<b>Equipment</b>	<b>Quantity</b>	<b>Unit</b>	<b>No. of Hours</b>	<b>Rate per Hour</b>	<b>Equipment Unit Cost</b>	<b>Amount</b>
3.1	Welding Machine	1.00	Unit	9.00			
3.2	Cutting Outfit	1.00	Unit	3.00			
3.3	Truck Mounted Crane(20-25 mt)	1.00	Unit	5.88			
3.4	Minor Tools (10% of Labor Cost)	1.00		-			
	<i>Equipment Cost -----</i>						
1	<b>Materials</b>	<b>Quantity</b>	<b>Unit</b>	<b>Unit Material Cost</b>	<b>Labor Unit Cost</b>	<b>Unit Cost</b>	<b>Amount</b>
1.1	Anchor Bolts	54.00	pcs.	210.00			
	<i>Material Cost -----</i>						
2	<b>Labor</b>	<b>Quantity</b>	<b>Unit</b>	<b>No. of Manpower</b>	<b>Rate per Hour</b>	<b>Labor Unit Cost</b>	<b>Amount</b>
2.1	Construction Foreman	5.40	Hrs	1.00			
2.2	Skilled Worker	5.40	Hrs	1.00			
2.3	Unskilled	5.40	Hrs	1.00			
	<i>Labor Cost -----</i>						
3	<b>Equipment</b>	<b>Quantity</b>	<b>Unit</b>	<b>No. of Hours</b>	<b>Rate per Hour</b>	<b>Equipment Unit Cost</b>	<b>Amount</b>
3.1	Minor Tools (10% of Labor Cost)	1.00	Ls.	-			
	<i>Equipment Cost -----</i>						
1	<b>Materials</b>	<b>Quantity</b>	<b>Unit</b>	<b>Unit Material Cost</b>	<b>Labor Unit Cost</b>	<b>Unit Cost</b>	<b>Amount</b>
1.1	Metal Structure Accessories (Checkered Steel Plates)	1,000.00	Kgs.	59.05			
	<i>Material Cost -----</i>						
2	<b>Labor</b>		<b>Unit</b>	<b>No. of Manpower</b>	<b>Rate per Hour</b>	<b>Labor Unit Cost</b>	<b>Amount</b>
2.1	Construction Foreman	76.95	Hrs	1.00			
2.2	Skilled Worker	76.95	Hrs	1.00			
2.3	Unskilled	76.95	Hrs	1.00			
	<i>Labor Cost -----</i>						
3	<b>Equipment</b>	<b>Quantity</b>	<b>Unit</b>	<b>No. of Hours</b>	<b>Rate per Hour</b>	<b>Equipment Unit Cost</b>	<b>Amount</b>
3.1	Minor Tools (10% of Labor Cost)	1.00	Ls.	-			
	<i>Equipment Cost -----</i>						
1	<b>Materials</b>	<b>Quantity</b>	<b>Unit</b>	<b>Unit Material Cost</b>	<b>Labor Unit Cost</b>	<b>Unit Cost</b>	<b>Amount</b>
1.1	Reinforced Concrete Pedestal/Post	1.00	Ls.	46,473.00			
	<i>Material Cost -----</i>						
2	<b>Labor</b>	<b>Quantity</b>	<b>Unit</b>	<b>No. of Manpower</b>	<b>Rate per Hour</b>	<b>Labor Unit Cost</b>	<b>Amount</b>
2.1	Construction Foreman	48.00	Hrs	1.00			
2.2	Skilled Worker	48.00	Hrs	1.00			
2.3	Unskilled	48.00	Hrs	2.00			

	Labor Cost -----						
3	Equipment	Quantity	Unit	No. of Hours	Rate per Hour	Equipment Unit Cost	Amount
3.1	Welding Machine	1.00	Unit	112.00			
	Equipment Cost -----						
1	Materials	Quantity	Unit	Unit Material Cost	Labor Unit Cost	Unit Cost	Amount
1.1	Hand Rail	1.00	Ls.	74,911.20			
	Material Cost -----						
2	Labor	Quantity	Unit	No. of Manpower	Rate per Hour	Labor Unit Cost	Amount
2.1	Construction Foreman	64.00	Hrs	1.00			
2.2	Skilled Worker	64.00	Hrs	1.00			
2.3	Unskilled/Helper	64.00	Hrs	1.00			
	Labor Cost -----						
3	Equipment	Quantity	Unit	No. of Hours	Rate per Hour	Equipment Unit Cost	Amount
3.1	Welding Machine	1.00	Unit	32.00			
3.2	Minor Tools(10% of Labor Cost)	1.00	Unit	0.00			
	Equipment Cost -----						
	A. (Sub-Total)						
SUB - TOTAL (VIII.STRUCTURAL STEEL WORKS)							
A	Total Direct Cost (Material, Labor and Equipment )						
B	Overhead, Contingencies and Miscellaneous (OCM) ( 12% of A )						
C	Contractor's Profit (CP) ( 8% of A )						
D	Value Added Tax ( VAT) ( 5% of A+B+C )						
E	Mobilization/Demobilization						
F	Occupational Safety and Health Program						
TOTAL PROJECT COST							

## PROGRAM OF WORKS

Name of Project: <b>CONSTRUCTION OF FIRE EXIT STAIR AT BOYS DORMITORY</b>			Location: <b>AMOR VILLAGE, SAN FRANCISCO EAST, ANAO, TARLAC CITY</b>	
Total Project Cost:	<b>PHP</b>		Project Duration:	<b>60 CALENDAR DAYS</b>
Source of Fund:	<b>REGULAR FUND</b>		Mode of Procurement:	<b>SMALL VALUE PROCUREMENT</b>
Date of POW:			Source of Manpower:	<b>OUTSOURCE</b>

Item No.	Item Description		Quantity	Unit	Unit Cost	AMOUNT
<b>I.</b>	<b>OTHER GENERAL REQUIREMENTS</b>					
	A.)	Mobilization/Demobilization	1.00	LS.		
	B.)	Occupational Safety and Health Program	1.00	LS.		
<b>SUB - TOTAL (I.OTHER GENERAL REQUIREMENTS)</b>						
<b>II.</b>	<b>CIVIL AND EARTHWORKS</b>					
	A.)	Demolition Works	1.00	LS.		
	B.)	Structural Excavation ( Common Soil)	8.00	CU.M		
	C.)	Embankment from Structure Excavation	10.19	CU.M		
	D.)	Gravel Fill	1.00	CU.M		
<b>SUB - TOTAL (II.CIVIL AND EARTHWORKS)</b>						
<b>III.</b>	<b>REINFORCING STEEL BAR WORKS</b>					
	A.)	Fabrication/erection and setting-up of Reinforcing bars for stair footings	500.00	KGS.		
<b>SUB - TOTAL (III.REINFORCING STEEL BAR WORKS)</b>						
<b>IV.</b>	<b>FORMS AND FALSE WORK</b>					
	A.)	Form,False works,braces,ribs and setting-up for Stair	10.15	SQ.M		
<b>SUB - TOTAL (IV.FORMS AND FALSE WORK)</b>						
<b>V.</b>	<b>STRUCTURAL CONCRETE WORKS</b>					
	A.)	Concrete pouring for Stair footing	6.00	CU.M		

SUB - TOTAL (V.STRUCTURAL CONCRETE WORKS)					
VI.	FABRICATED MATERIALS AND HARDWARES				
	A.)	Installation of fabricated Fire Rated Fire Exit Steel Door, Aluminum Powder Coated Glass Windows, prefabricated doors and door jambs, including the neccessary part and accessories	14.34	SQ.M	
SUB - TOTAL (VI.FABRICATED MATERIALS AND HARDWARES)					
VII.	PAINTING WORKS				
	A.)	Masonry/Concrete Painting wall and Metals	27.28	SQ.M	
SUB - TOTAL (VII.PAINTING WORKS)					
VIII.	STRUCTURAL STEEL WORKS				
	A.)	Fabrication, Welding and Installation of Structural Steel Angular Bar,Reinforced Concrete Pedestal,Steel Plates, Anchor Bolts and Steel Railing	1.00	Ls.	
SUB - TOTAL (VIII.STRUCTURAL STEEL WORKS)					
A	Total Direct Cost (Material, Labor and Equipment)				
B	Overhead, Contingencies and Miscellaneous (OCM) (12% of A )				
C	Contractor's Profit (CP) ( 8% of A )				
D	Value Added Tax (VAT) (5% of A +B+C)				
E	Mobilization/Demobilization				
E	Occupational Safety and Health Program				
TOTAL PROJECT COST					

DRN: \_\_\_\_\_

## CONTRACTOR'S TERMS OF REFERENCE

Name of Project: <b>CONSTRUCTION OF FIRE EXIT STAIR AT BOYS DORMITORY</b>		Location: <b>AMOR VILLAGE, SAN FRANCISCO EAST, ANAO, TARLAC CITY</b>	
Total Project Cost:	<b>PHP</b>	Project Duration:	<b>60 CALENDAR DAYS</b>
Source of Fund:	<b>REGULAR FUND</b>	Mode of Procurement:	<b>SMALL VALUE PROCUREMENT</b>
Date of POW:	<b>September 10, 2022</b>	Source of Manpower:	<b>OUTSOURCE</b>

### GENERAL CONDITION AND REQUIREMENTS

**A.) Contractor's Qualification(s)**

- 1.) Service Provider/ Contractor shall have competence and meaningful experience of minimum of Five (5) years of Construction works.
- 2.) Service Provider/ Contractor shall have a Single Largest Contract with similar project contract and scope such as construction, improvement/ rehabilitation/ repair of building interior/ exterior works completed within the two(2) years from the deadline of bid submission, whose the value of contract amount must at least fifty percent (50%) of the ABC with supported by the Contractors Performance Evaluation System rating or a certificate of satisfactory rating or certificate of satisfactory completion of the project issued by the owner of the previous completed project.
- 3.) Service Provider/ Contractor required license Category for the Philippines Contractor's Accreditation Board Circular No. 001, series of 2009

Size Range	License Category	Classification
Small B	C & D	General Engineering/ General Building

**B.) Contractor's Working Hours**

- 1.) All normal works for regular days of this contract shall be performed during office hours (8:00Am to 5:00Pm), including Weekends, Holiday and Special Holiday with proper coordination/approval to RPMT Implementing Team.
- 2.) The Contractor/Service Provider shall be required to furnish safe, proper and sufficient lighting arrangement during overnight works.
- 3.) Weekends/holidays shall deploy a maximum number of manpower based on the submitted Contractors Schedule, just to catch-up the possible delays due to possible stoppage instructed by RPMT Implementing Team.

**C.) Contractor's Responsibilities and Conditions**

- 1.) Contractor/Service Provider shall request a Pre-Construction Meeting with RPMT Engineer and Centerhead before the start of work.
- 2.) Contractor shall control the generation of dust and flying particles from the operation and shall provide a temporary closure to prevent creation of nuisance to the adjacent offices/rooms;
- 3.) Contractor/ Service Provider shall submit own construction schedule, manpower deployment schedule, equipment's/ tools schedule, list of manpower to be deployed and Project Site organizational structure within five (5) days upon received of Notice of Award;
- 4.) Contractor/Service provider shall assigned project engineer/project architect from the start until completion stage;
- 5.) Contractor/Service provider shall coordinate to the RPMT Implementing Team all the execution works;
- 6.) Contractor/Service provider shall provide warning signages, project signboard, contractors project log book;
- 7.) Contractor/Service provider's workers shall sign on the logbook before entering the premises as reference of the DSWD-Regional Center security guards.
- 8.) Contractor/Service provider shall provide/submit Statement of Works Accomplishment, Progress Photos and Narrative report as requirement of the billing request;
- 9.) Contractor/Service provider shall submit weekly progress reports with attached progress photos to RPMT Implementing team;
- 10.) Contractor/Service provider shall provide delivery receipt or list of all materials brought inside the compound including the list of equipment and tools ;
- 11.) Contractor/Service provider shall provide complete uniform with ID and basic PPE for all the construction worker and personnel; and
- 12.) Contractor/ Service Provider shall have at least Project Licence Civil Engineer with minimum experience of three (3) years or Licence Architect with minimum experience of three (3) years and General Foreman with a minimum experience of Five (5) years of finishing works in construction industry.
- 13.) The Contractor/Service Provider shall strictly comply/observe the Construction Safety Guidelines for the Implementation of All Infrastructure Projects during the Covid-19 Public Health Crisis as per DPWH Department Order No. 35 Series of 2020. (see Annex D)
- 14.) Contractor/Service Provider shall issue a Certification to the Procuring Entity that the Equipment listed in their Previous Awarded Project/s will no longer be used to the other DSWD Project/s for Bidding except for Service Truck. In case, the Equipment is rented; the Contractor/Service Provider shall submit a copy of Lease of Agreement.

**D.) Recommended Terms of Payment**

- 1.) The Payment for this project shall be made upon completion of the following activity/scope of works:

Payment Tranches	Outputs/ Deliverables
1st Tranche : 15% payment of the total contract cost less 10% Retention	Must be Fifty Percent (15 %) of project completion/ physical accomplishment with the submission of Billing Statement, Progress/Accomplishment Report, Statement of Work Accomplished, Progress Photos, and Narrative Report.
2nd Tranche: 35 % payment of the total contract cost less 10% Retention	Must be Fifty Percent (50 %) of project completion/ physical accomplishment with the submission of Billing Statement, Progress/Accomplishment Report, Statement of Work Accomplished, Progress Photos, and Narrative Report.
3rd Tranche: 50 % payment of the contract cost less 10% Retention	Must be Hundred Percent (100%) physical completed Upon with submission of Billing Statement, Contractors accomplishment reports, Statement of Work Accomplished, Progress Photos, Narrative report, Contractors certificate of completion, contractors warranty security, contractors request for acceptance and turn-over certificate; and Notarized certificate of warranty.
4th Final Tranche: 10 % payment of the total contract price(10% Retention Money)	Must be one (1) month and without damage/defect of installed items and Upon Submission of Contractors warranty security issued by the private insurance company, Notarized Certificate of Warranty.

**E.) Contractor's Minimum Major Equipment and Tools Requirements**

1.) List of Minimum major equipment/ tools requirement are the following

	1 unit one-bagger concrete mixer		1-unit Service Truck (atleast ELF)		

**F.) Other General Requirements**

- 1 All dimensions/level etc. indicated in the drawing plans are to be verified on the site;
- 2 All materials are subjected for the approval by the End- user/RPMT Project Engineer;
- 3 Any discrepancies, either between written dimensions and site dimensions shall be brought to the RPMT office before executing the works;
- 4 All equipment, tools, scaffolding and other personnel needed shall be provided by the service provider/contractor;
- 5 Removal, dismantling and demolition work shall be coordinated and requested to the RPMT Implementing Team;
- 6 All waste materials shall be turned over to the RPMT Implementing Team with proper documentation;
- 7 No additional/extra cost to be claimed/charged by the Contractor for the Construction Works alone other than those expressly approved by the Procuring Entity
- 8 All works shall comply with the National Building Code of the Philippines, Fire Code of the Philippines, Philippine Electrical Code and Department rules and Regulations and other relevant laws, rules and regulations.

DRN: III-FO-PSD-CBSS-SS-TOR-22-09-08732-S

## TERMS OF REFERENCE

### AMOR VILLAGE CONSTRUCTION OF FIRE EXIT STAIR AT BOYS DORMITORY

#### A. Background/Rationale

The **AMOR Village** is a residential care facility designed to provide healing and empowerment to abandoned, neglected and abused children and children with disabilities. It is a 24/7 residential facility a total bed capacity of 120. To date, the center has 115 residents with special needs to date and is expecting new admissions these coming months.

The **AMOR Village** primarily serves children with special needs who abandoned, neglected, abused and victims of domestic violence and ages 6 to 17 years old, both male and female. However, the age will be classified according to their mental age. Catering children with special needs entails many challenges wherein the staffs are trying to cope up to be effective workers at all times. Priority clients for admission are the abandoned children with special needs. Case Categories, such as:

##### A. Persons with Physical Impairment:

1. Orthopedically Handicapped
2. Visual Impaired
3. Hearing Impaired
4. Other disabilities (such as speech defect, hunchback, cleft palate)

##### B. Persons with features of Neuro-Developmental Disorders:

1. Persons with Intellectual Disability (ID)
2. Persons with Autism Spectrum Disorder (ASD)
3. Persons with Attention Deficit Hyperactive Disorder (ADHD)
4. Persons with Specific Learning Disorder
5. Persons with Down Syndrome
6. Persons with Cerebral Palsy

The **DSWD AMOR VILLAGE** is the only government facility for special children in Region 3. It is compose of 19 buildings with 2 big dormitories catering 40 cases for boys and 40 girls dormitory .We have 2 new cottages for extra ordinary cases the cerebral palsy, multi –disability case that can accommodate 20 cases while the 2 extension rooms could also accommodate 20 cases. Our infirmary has separate buildings with different amenities to be installed; and the new isolation building.

Since one of our major goals is to be known as center of excellence, a child loving center and lover of nature, including the safety and protection of our residents are the primary goals at any given time. In case of emergency and disaster, one of the requirements for center



accreditation are the fire exit stairs in every building, particularly at the female and male dormitories. Thus, the need for the construction fire exit stairs that is made available and accessible to the residents in all dormitories in the center.

## **B. Objectives**

1. To ensure safety and protection of the residents, the staff in the center at any given time.
2. To comply with the requirements of the Center Accreditation.

## **C. Scope of Works**

The Protective Services Division – Center Based Services Section is responsible for ensuring the compliance of 7s Good Housekeeping in order to achieve the organization's vision and goal. Thus, in order to ensure the section's contribution in the achievement of the said vision, the proposal of Construction of Fire Exit Stair at Boys Dormitory is being made. The following Scope of Works is as follows:

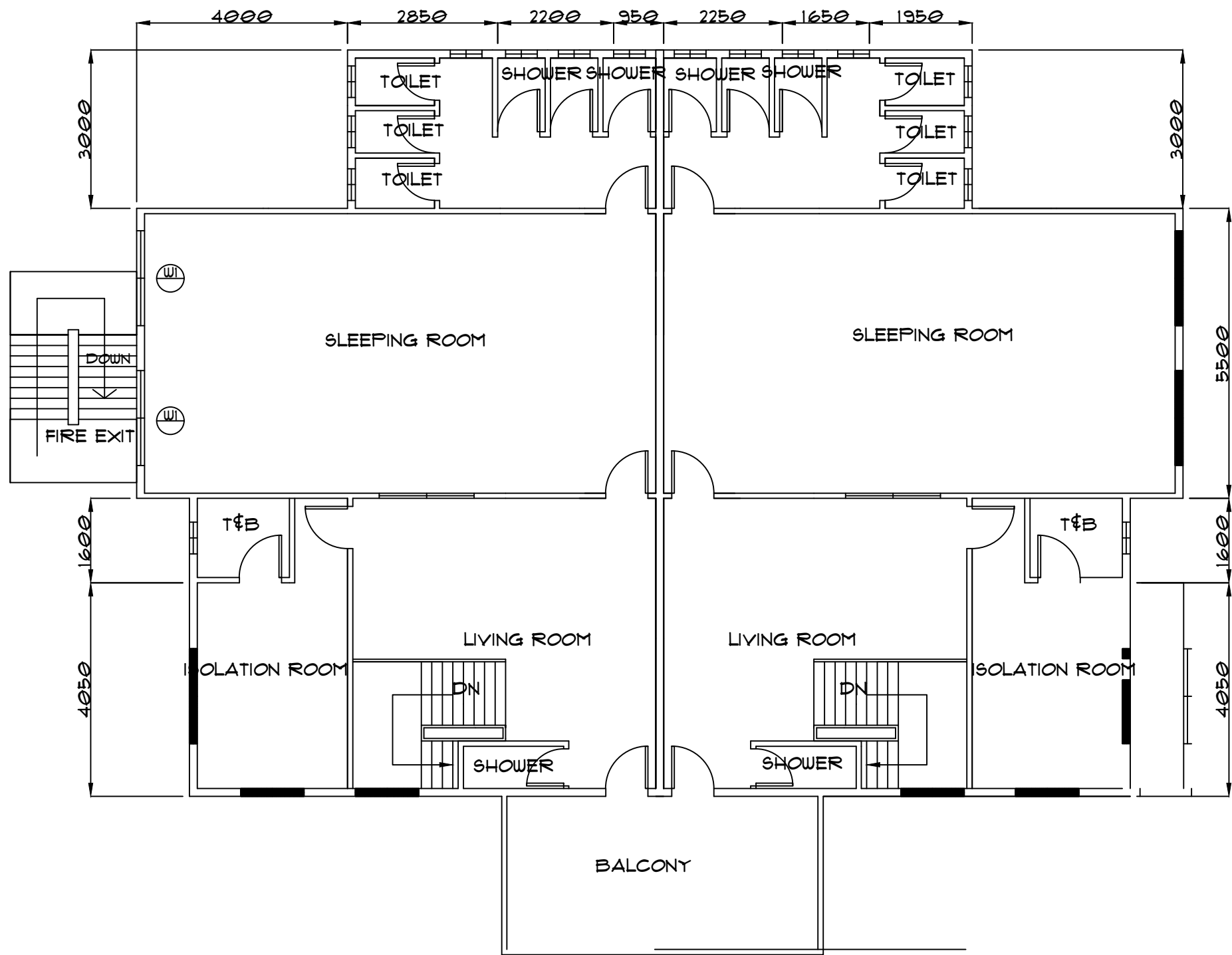
1. Mobilization/Demobilization
2. Occupational Safety and Health Program
3. Demolition Works
4. Structural Excavation (Common Soil)
5. Embankment from Structure Excavation
6. Gravel Fill
7. Fabrication/erection and setting-up of Reinforcing bars for stair footings
8. Form, False works, braces, ribs and setting-up for Stair
9. Concrete pouring for Stair footing
10. Installation of fabricated Fire Rated Fire Exit Steel Door, Aluminum Powder Coated Glass Windows, prefabricated doors and door jambs, including the necessary part and accessories
11. Masonry/Concrete Painting Wall and Metals
12. Fabrication, Welding and Installation of Structural Steel Angular Bar, Reinforced Concrete Pedestal, Steel Plates, Anchor Bolts and Steel Railing Installation of Electrical Lighting Fixtures including complete necessary accessories

## **D. Schedule of Works**

The project duration is Sixty (60) Calendar days and will commence a day after the pre-construction meeting.

## **E. Qualification, Duties and Responsibilities of the Service Provider**

See Contractor's Terms of References

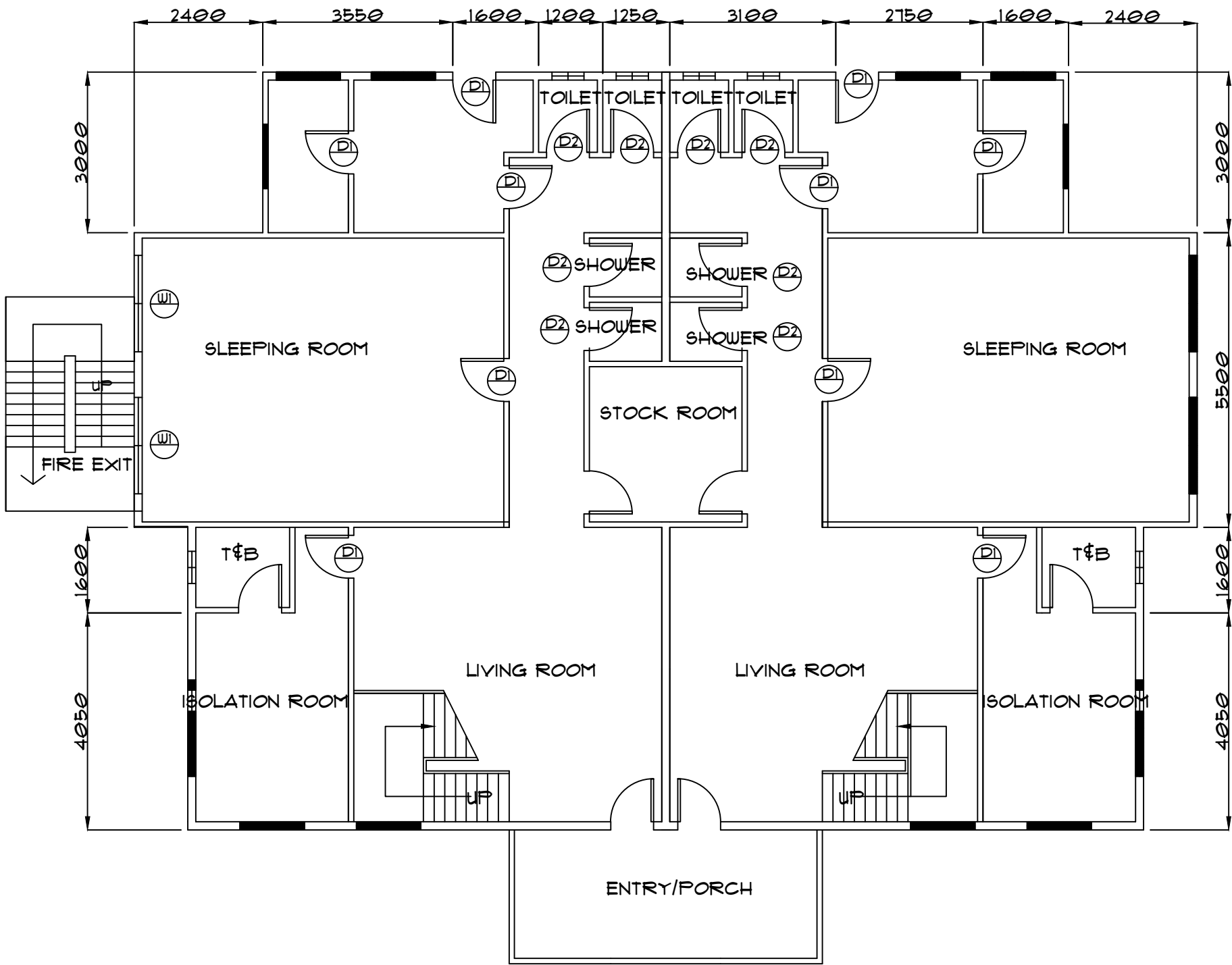


BOYS DORMITORY  
SECOND FLOOR

SCALE : 1 : 100

TABLE OF CONTENTS	REPUBLIC OF THE PHILIPPINES
ARCHITECTURAL	DEPARTMENT OF PUBLIC WORKS AND HIGHWAYS
SECOND FLOOR PLAN	OFFICE OF THE BUILDING OFFICIAL
	DISTRICT/CITY/MUNICIPALITY
	LANDUSE AND ZONING
	LINE AND GRADE
	ARCHITECTURAL
	STRUCTURAL
	ELECTRICAL
	MECHANICAL

NAME AND LOGO	PROJECT TITLE	PREPARED:	REVIEWED/CHECKED	SUBMITTED:	RECOMMENDING APPROVAL AS TO PURPOSE	RECOMMENDING APPROVAL AS TO ALLOTMENT:	APPROVED:	CO-APPROVED:	SHEET CONTENTS:	SHEET NO.
<div><div><div>REPUBLIC OF THE PHILIPPINES</div><div>DEPARTMENT OF SOCIAL WELFARE AND DEVELOPMENT</div><div>FIELD OFFICE II</div></div><div><div><div>OFFICE OF THE REGIONAL DIRECTOR</div><div>Planning and Design Division</div></div><div><div>GOVERNMENT CENTER II, YAMBOU, CITY OF SAN FERNANDO, PAMPANGA</div></div></div></div> <div>CONSTRUCTION OF FIRE EXIT STAIR AT BOYSDORM</div> <div>AMOR VILLAGE</div>	MARIO R. BAUTISTA, CE		ROUENA L. AFOLTO	PRISCILA C. TIOPENGCO	RENANN M. MACAPINLAC	VENUS F. REBULDELA		AS SHOWN		
	ENGINEER III		CENTER HEAD	REGIONAL CENTER COORDINATOR	BUDGET SECTION CHIEF	CONCURRENT OIC REGIONAL DIRECTOR AND ARDC				



BOYS DORMITORY  
GROUND FLOOR

SCALE : 1: 100

TABLE OF CONTENTS	REPUBLIC OF THE PHILIPPINES
ARCHITECTURAL	DEPARTMENT OF PUBLIC WORKS AND HIGHWAYS
FIRST FLOOR PLAN	OFFICE OF THE BUILDING OFFICIAL
	DISTRICT/CITY/MUNICIPALITY
	LANDUSE AND ZONING
	LINE AND GRADE
	ARCHITECTURAL
	STRUCTURAL
	ELECTRICAL
	MECHANICAL


NAME AND LOGO	PROJECT TITLE	PREPARED	REVIEWED/CHECKED	SUBMITTED	RECOMMENDING APPROVAL AS TO PURPOSE	RECOMMENDING APPROVAL AS TO ALLOTMENT	APPROVED	CO-APPROVED	SHEET CONTENTS	SHEET NO.
<div>REPUBLIC OF THE PHILIPPINES DEPARTMENT OF SOCIAL WELFARE AND DEVELOPMENT FIELD OFFICE II</div> <div>OFFICE OF THE REGIONAL DIRECTOR Planning and Design Division</div> <div>GOVERNMENT CENTER, SAMARU, CITY OF SAN FERNANDO, PAMPANGA</div>	CONSTRUCTION OF FIRE EXIT STAIR AT BOYS DORM	MARIO R. BAUTISTA, CE		ROWENA L. AFOLTO	PRISCILA C. TIOPENGCO	RENANN M. MACAPINLAC	VENUS F. REBULDELA		AS SHOWN	
		ENGINEER II		CENTER HEAD	REGIONAL CENTER COORDINATOR	BUDGET SECTION CHIEF	CONCURRENT OC REGIONAL DIRECTOR AND ARDC			

 		TABLE OF CONTENTS		REPUBLIC OF THE PHILIPPINES	
		ARCHITECTURAL		DEPARTMENT OF PUBLIC WORKS AND HIGHWAYS	
PERSPECTIVE LOCATION MAP SITE DEVELOPMENT				OFFICE OF THE BUILDING OFFICIAL	
				DISTRICT/CITY/MUNICIPALITY	
				LANDUSE AND ZONING	
				LINE AND GRADE	
				ARCHITECTURAL	
				STRUCTURAL	
				ELECTRICAL	
				MECHANICAL	

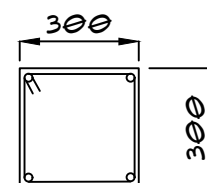
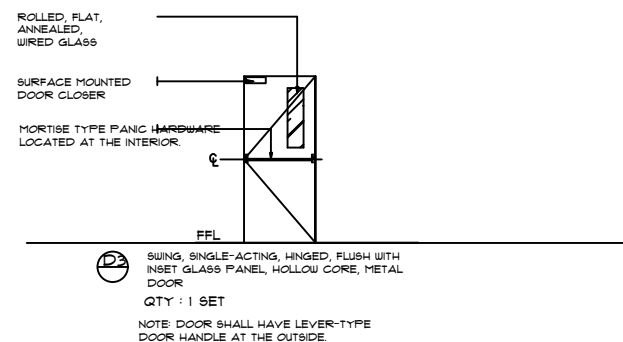
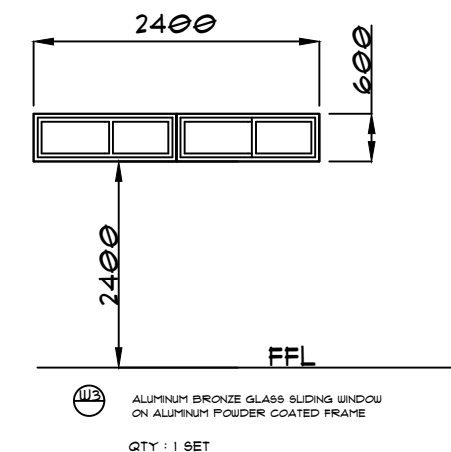


LOCATION MAP  
N T S



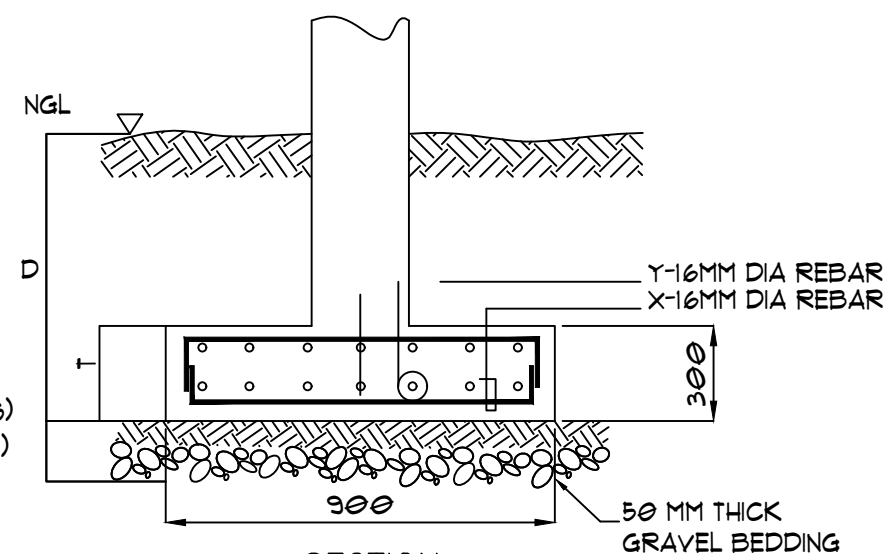
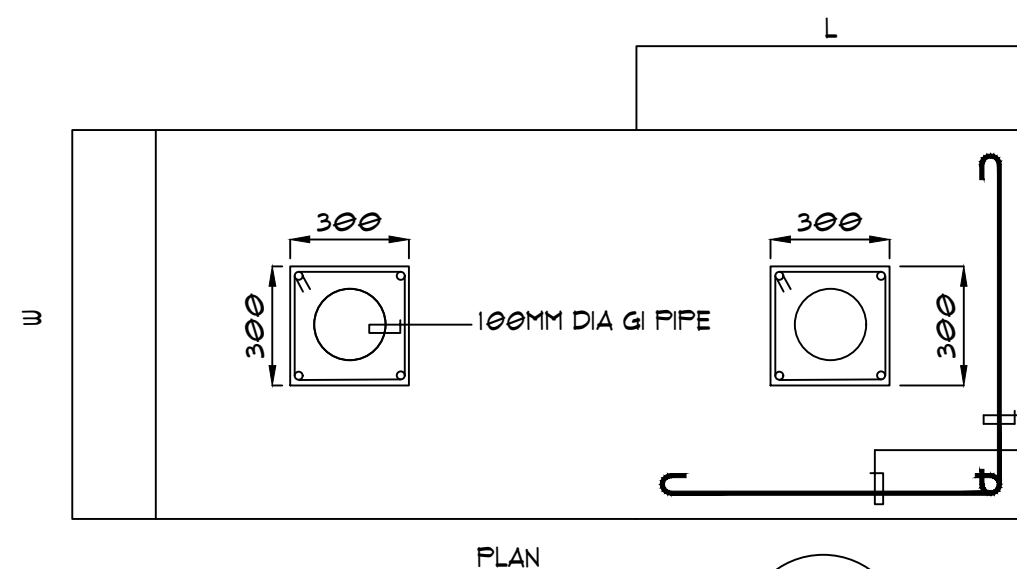
SITE DEVELOPMENT PLAN  
N T S

NAME AND LOGO	PROJECT TITLE	PREPARED	REVIEWED/CHECKED	SUBMITTED	RECOMMENDING APPROVAL AS TO PURPOSE	RECOMMENDING APPROVAL AS TO ALLOTMENT	APPROVED	CO-APPROVED	SHEET CONTENTS	SHEET NO.
<div><div></div><div>REPUBLIC OF THE PHILIPPINES DEPARTMENT OF SOCIAL WELFARE AND DEVELOPMENT FIELD OFFICE II  OFFICE OF THE REGIONAL DIRECTOR Planning and Design Division  <small>GOVERNMENT CENTER, SAMAR, CITY OF SAN FERNANDO, PAMPANGA</small></div></div>	CONSTRUCTION OF FIRE EXIT STAIR AT BOYS DORM  AMOR VILLAGE	MARIO R. BAUTISTA, CE		ROUENA L. AFOLTO	PRISCILA C. TIOPENGCO	RENANN M. MACAPINLAC	VENUS F. REBULDELA		AS SHOWN	
		ENGINEER II		CENTER HEAD	REGIONAL CENTER COORDINATOR	BUDGET SECTION CHIEF	CONCURRENT OC REGIONAL DIRECTOR AND ARDO			



MAIN BAR:  
4- $\phi$ 16mm

TIES :  $\phi$ 10 mm  
1@50, 8@75, REST @  
150mm TO CENTER



## TYP. FOOTING DETAIL

SCALE : \_\_\_\_\_ NTS \_\_\_\_\_

TABLE OF CONTENTS	REPUBLIC OF THE PHILIPPINES
ARCHITECTURAL	DEPARTMENT OF PUBLIC WORKS AND HIGHWAYS
WINDOW AND DOOR SCHEDULE FOOTING DETAIL/PEDESTAL	OFFICE OF THE BUILDING OFFICIAL
	DISTRICT/CITY/MUNICIPALITY
	LANDUSE AND ZONING
	LINE AND GRADE
	ARCHITECTURAL
	STRUCTURAL
ELECTRICAL	
MECHANICAL	


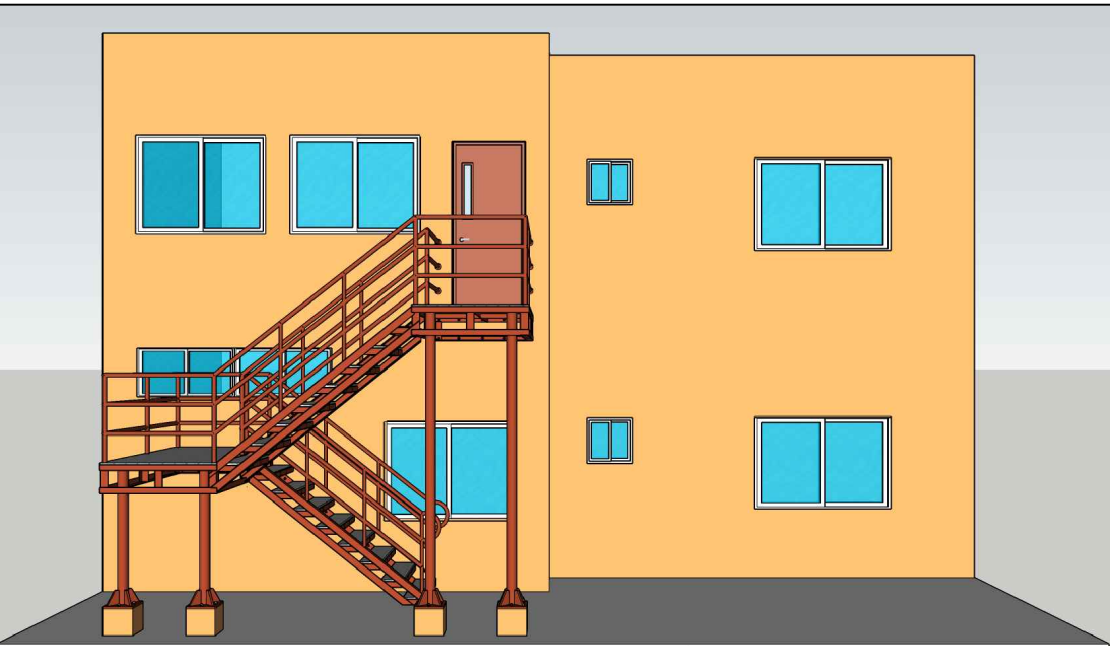
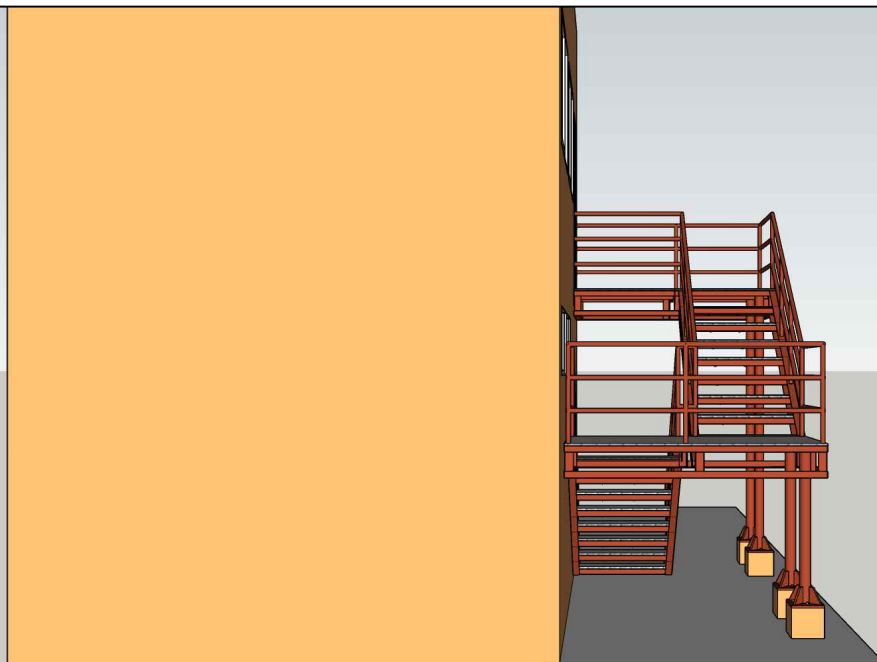

NAME AND LOGO	PROJECT TITLE	PREPARED	REVIEWED/CHECKED	SUBMITTED	RECOMMENDING APPROVAL AS TO PURPOSE	RECOMMENDING APPROVAL AS TO ALLOTMENT	APPROVED	CO-APPROVED	SHEET CONTENTS	SHEET NO.
<div style="text-align: center;">  <p>DEPARTMENT OF SOCIAL WELFARE AND DEVELOPMENT FIELD OFFICE III</p> <p>OFFICE OF THE REGIONAL DIRECTOR Planning and Design Division</p> <p>GUZMARET CANTON, VANDER - CITY OF SAN FERNANDO, PANGASINAN</p> </div>	<p>CONSTRUCTION OF FIRE EXIT STAIR AT BOYS DORM</p> <p>AMOR VILLAGE</p>	MARIO R. BAUTISTA, CE		ROWENA L. APOLTO	FRISCILA C. TIOPENGCO	RENANN M. MACAPINLAC	VENUS F. REBULDELA		AS SHOWN	
		ENGINEER III		CENTER HEAD	REGIONAL CENTER COORDINATOR	BUDGET SECTION CHIEF	CONCURRENT OIC REGIONAL DIRECTOR AND ARDC			



		TABLE OF CONTENTS		REPUBLIC OF THE PHILIPPINES	
		ARCHITECTURAL		DEPARTMENT OF PUBLIC WORKS AND HIGHWAYS	
		ELEVATIONS		OFFICE OF THE BUILDING OFFICIAL	
				DISTRICT/CITY/MUNICIPALITY	
				LANDUSE AND ZONING	
				LINE AND GRADE	
				ARCHITECTURAL	
				STRUCTURAL	
				ELECTRICAL	
				MECHANICAL	

			
FRONT ELEVATION		LEFT ELEVATION	

	
RIGHT ELEVATION	

NAME AND LOGO	PROJECT TITLE	PREPARED	REVIEWED/CHECKED	SUBMITTED	RECOMMENDING APPROVAL AS TO PURPOSE	RECOMMENDING APPROVAL AS TO ALLOTMENT	APPROVED	CO-APPROVED	SHEET CONTENTS	SHEET NO.
<div>REPUBLIC OF THE PHILIPPINES DEPARTMENT OF SOCIAL WELFARE AND DEVELOPMENT FIELD OFFICE II</div> <div>OFFICE OF THE REGIONAL DIRECTOR Planning and Design Division</div> <div>GOVERNMENT CENTER, YAMBO, CITY OF SAN FERNANDO, PAMPANGA</div>	CONSTRUCTION OF FIRE EXIT STAIR AT BOYS DORM  AMOR VILLAGE	MARIO R. BAUTISTA, CE		ROWENA L. APOLTO	PRISCILA C. TIOPENGCO	RENANN M. MACAPINLAC	VENUS F. REBULDELA		AS SHOWN	
		ENGINEER II		CENTER HEAD	REGIONAL CENTER COORDINATOR	BUDGET SECTION CHIEF	CONCURRENT OC REGIONAL DIRECTOR AND ARDO			